



GRIFFITH TUTORING CENTRE CHALKBOARD

Quarterly Newsletter

This issue:

- Interpreting NAPLAN
- Competition Time
- Small Group Tuition
- 2023 Important Dates
- Teacher Feature
- 24hrs notice of absence



Interpreting NAPLAN Results

As a parent, receiving your child's NAPLAN results can be an exciting and nerve-racking time. While the results can give you a glimpse into your child's academic progress, it can be challenging to understand what the scores mean and how you can use them to help your child succeed.

In Australia, the National Assessment Program – Literacy and Numeracy (NAPLAN) is an annual assessment for students in years 3, 5, 7, and 9. The test assesses students' abilities in reading, writing, language conventions (spelling, grammar, and punctuation), and numeracy. When interpreting your child's NAPLAN results, it's essential to keep in mind that the scores represent a snapshot of your child's academic abilities at a particular point in time. The scores do not define your child's intelligence or potential. Instead, they offer insight into areas where your child may need additional support or where they excel.

Here are some tips to help you interpret your child's NAPLAN results and use them to support their academic growth:

- ◆ Understand the scoring system: NAPLAN uses a scale from 0 to 1000 to report individual student scores. The scale is divided into ten bands, with each band representing a range of scores. The higher the band, the higher the student's performance. Focus on growth: Instead of fixating on your child's overall score, pay attention to how they've progressed from the previous year. Comparing your child's results to their previous scores can help you track their growth and identify areas where they've improved or where they need additional support.
- ◆ Use the results to identify strengths and weaknesses: The NAPLAN results can provide insight into your child's strengths and weaknesses in literacy and numeracy. Use this information to tailor your child's learning experiences and provide support where needed. For example, if your child struggles with writing, you may want to encourage them to practice writing more often or enroll them in a writing workshop.
- ◆ Talk to your child's teacher: Your child's teacher can provide valuable insight into their NAPLAN results and how they can support your child's academic growth. Schedule a meeting with your child's teacher to discuss the results and create a plan to address any areas where your child needs additional support.
- ◆ Don't stress too much: While NAPLAN is an important assessment, it's not the only measure of your child's academic progress. Remember that your child's score is just one piece of the puzzle and that there are many ways to support your child's academic growth.

We encourage any interested parents to provide us with their child's NAPLAN results once they have been released, as we are more than happy to incorporate any additional areas of weakness into your child's sessions.

This term our raffle prize for a Positive Attitude and Hard Work goes to Aston Rosato!

Which prize will Aston choose?!
What new prize should we add to the cabinet next?



What do you think about our new prize cabinet? The kids have been busy imagining which prize they will choose!



CHALKBOARD continued....

This issue:

- Interpreting NAPLAN
- Competition Time
- Small Group Tuition
- 2023 Important Dates
- Teacher Feature
- 24hrs notice of absence

In 2023, students who display a strong work ethic and a positive attitude to learning during their weekly session, will enter the draw to win an end of year prize.



Benefits of Small Group Tuition

Small group tuition is a form of private tutoring that involves teaching a small group of typically between two to six students, by a qualified teacher or tutor. It is becoming increasingly popular as parents and educators recognize its many benefits, especially for school-aged children.

- ◆ **Personalized Attention:** One of the biggest advantages of small group tuition is that each student can receive more personalized attention from the tutor. In a small group, the tutor can focus on the specific needs of each student, identify their strengths and weaknesses, and tailor the teaching to suit each individual student's learning style.
- ◆ **Increased Engagement:** In small group tuition, students are more likely to engage with the material being taught. Small groups are less intimidating than a large classroom environment and provide a safe and supportive space for students to ask questions and participate actively in the learning process. This can help to increase students' confidence in their ability to learn and to develop a love for learning.
- ◆ **Improved Performance:** Small group tuition has been shown to improve academic performance significantly. With personalized attention and tailored teaching, students can achieve better grades and develop a deeper understanding of the subject matter. In addition, small group tuition can help to identify and address any knowledge gaps or misconceptions that may be hindering a student's progress.
- ◆ **Enhanced Social Skills:** Small group tuition can help students develop social skills, such as teamwork, communication, and collaboration. Students have the opportunity to interact with their peers and learn from each other, fostering a sense of community and support. This can also help to build relationships between students, which can lead to greater motivation and engagement in the learning process.

2023 IMPORTANT DATES



TERM 01

Tuesday, January 31st - Thursday, April 6th
10 x Weeks.
Closed Staff Development Day (Monday, 30th Jan)
Closed Good Friday (Friday, 7th April)

TERM 02
Monday, April 24th - Friday, June 30th
10 x Weeks.
Closed ANZAC Day (Tuesday, 25th April)
Closed King's Birthday (Monday, 12th June)



TERM 03

Monday, July 17th - Friday, September 22nd
10 x Weeks.

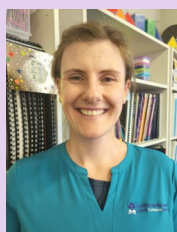
TERM 04
Monday, October 9th - Friday, December 15th
10 x Weeks.
Closed Staff Development Days
(Monday 18th, Tuesday 19th December)



CAN'T MAKE YOUR SCHEDULED LESSON?

Call us beforehand to provide 24hrs prior notice, then go to our website/Facebook to book a catch up session.

▶▶▶ TEACHER FEATURE ▶▶▶



This Term we are very pleased to welcome Meg to the GTC teaching team. Meg has been working on Tuesdays with students who are at the beginning of their reading journeys. Meg's skill set is in high demand; we already have a number of students waiting for positions to become vacant.

Meg has always known that she wanted to work as a teacher. To gain experience supporting young people, she worked as a youth activities officer at the PCYC during high school, as well as in after school and vacation care programs. Meg graduated from Charles Sturt University in Bathurst with a Bachelor of Early Childhood and Primary Education (Birth to 12 years) in 2011. Since then, she has taught in Preschool and Early Learning centres in Griffith, Melbourne and the Tamworth region. Meg moved to the UK where she taught kindergarten-aged students at schools in London. She also worked in various after school care and vacation programs. Meg worked as a welfare officer for International Students at Ardmore Language school in the UK during their summer season and, later, Meg as a camp counsellor at a summer camp for disadvantaged and homeless youth in New York State, USA. Meg moved to the UK where she taught kindergarten-aged students at schools in London. She also worked in various after school care and vacation programs. Meg worked as a welfare officer for International Students at Ardmore Language school in the UK during their summer season and, later, Meg as a camp counsellor at a summer camp for disadvantaged and homeless youth in New York State, USA.

24 hours Prior Notice of Absence

Required from Term 2, 2023

- ▶ Our Enrolment Terms and Conditions have been updated. This information has been communicated via SMS, email, Facebook and signage in centre.
- ▶ From Monday 24th April, 2023, this is the minimum notice required to be eligible for catch-up lessons.
- ▶ Thank you for cooperating with these changes which will allow us to make more catch up sessions available and better manage our staffing processes.



Well-fed kids concentrate better!
Please make sure your child has eaten something healthy BEFORE their session, to ensure they can fully engage in their learning. Often students say they can't concentrate due to hunger.