



GRIFFITH TUTORING CENTRE CHALKBOARD

Quarterly Newsletter

This issue:

- Bright Star #2
- Competition Time
- Communicating Progress
- Medical Conditions
- Key Dates for 2021
- End of Term Procedures



The articles contained within are designed to provide up to date information about GTC's services, so that all clients are better able to make informed educational decisions.

BRIGHT STAR #2.....



Kade has been receiving tuition support from Dani for more than 3 years. When he began late in Year 5, he was falling behind due to having low confidence in his own abilities, especially in maths. These days, as a high-achieving Year 9 student, Kade has been heard to say such things as "I love maths now!" and "Geography is just so good!" Last week, Kade's HSE report on Biomes received a mark of 52/55. His writing style has evolved beyond his years. We are super proud of his achievements! Kade's story is a great example of how hard work, curiosity and a productive student-tutor relationship can impact positively upon

*This term our raffle prize for a Positive Attitude and Hard Work goes to
Therese Nicolls!*



MULTIPLICATION MATH FACTS

This year we are looking for Times Tables Rock Stars! To encourage our students to build stronger foundations in maths, we are running a new competition.

The student who achieves the highest percentage improvement in their times tables speed, will earn 2 free movie tickets. Children who practise frequently at home will have a better chance of winning.

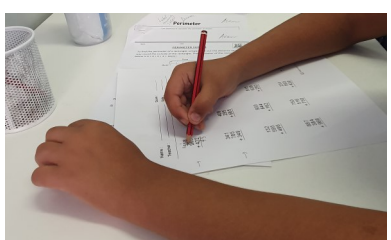
Congratulations to our winner for Term 2! Asamul H. improved his starting score by 50%!

► ► COMMUNICATING ABOUT PROGRESS ► ►

Many parents are interested to know what their children have been working on and how they are progressing. Of an afternoon, our centre can be a bustling hive of learning. In addition to this, many students arrive at their sessions independently and it can be difficult for our tutors to speak parents as often as we would like. To maximise monitoring and communication we have implemented the following;

- **Weekly Communication Cards** provide a quick insight into your child's activities for the session.
- **6 Monthly Learning Assessments** provide data-based evidence of progress for primary students.
- **Meetings** are available with centre management on by appointment.
- **End of Term Progress Reports** provide up to date information on student progress, weaknesses and behaviours. This report is intended to provide you with a clear understanding of exactly what your child has been focusing on during the term. It will highlight how topics and skills that have been addressed already, as well as identifying those that will become a focus of future lessons. Under 'Future Recommendations', you will find helpful suggestions of home study activities that would be of further benefit to your child's progress in education.

GTC recommends that parents regularly discuss tutoring with their children. Do they enjoy the tuition process? Is it helpful? Do they feel better about school?



CHALKBOARD continued....

This issue:

- Bright Stars #2
- Competition Time
- Communicating Progress
- Medical Conditions
- Key Dates for 2021
- End of Term Procedures

In 2021, students who display a strong work ethic and a positive attitude to learning during their weekly session, will enter the draw to win an end of year prize.



DOES YOUR CHILD HAVE A SERIOUS MEDICAL CONDITION THAT WE NEED TO KNOW ABOUT?

As part of our ongoing efforts to ensure the safety of everyone who attends GTC, we request that parents provide us with detailed information about their child's serious medical conditions, including Medical Management Plans, where applicable. Serious medical conditions may include, but are not limited to:

- ◆ Asthma
- ◆ Epilepsy
- ◆ Anaphylaxis/Allergy
- ◆ Heart Conditions

REMINDER:

Our office does not have private bathroom facilities. Toileting your child prior to their tutoring session ensures that we can supervise all children adequately.

2021 IMPORTANT DATES



TERM 01

Monday, February 1st - Thursday, April 1st
9 x Weeks.
Closed Good Friday (Friday, April 2nd)

TERM 02

Monday, April 19th - Friday, June 25th
10 x Weeks.
Closed Queen's Birthday (Monday June 14th)



TERM 03

Monday, July 12th - Thursday, September 17th
10 x Weeks.

TERM 04

Tuesday, October 5th - Friday, December 10th
9 x Weeks.
Closed Labour Day (Monday, October 4th)



0474 328 911

www.griffithtutoringcentre.com

CAN'T MAKE YOUR SCHEDULED LESSON?

**SMS/Call us beforehand on
0474 328 911
to arrange a catch up!**

▶▶▶ END OF TERM PROCEDURES ▶▶▶

At GTC, we are as surprised as you that Term 3 is almost over and are already thinking about how to put our best foot forward when entering Term 4. Some information has already been sent your way, and there is more to come:

- ◆ **SMS Message**— Sent last weekend, this SMS asked whether you intend to re-enrol your child for Term 4. A prompt reply will ensure that a session is reserved in your name and our schedule can continue to be the well-oiled machine that it is!
- ◆ **Client Feedback Survey**— received via email, this short survey is designed to give clients some input into improving our services. We greatly appreciate all who take the time to do this!
- ◆ **Term 4 Invoices**—Anyone who has previously chosen our pay-per-term fee option will receive their invoice via email before the end of September. To receive the 5% discount, accounts must be settled by C.O.B. Friday, October 15th (Week 2).

We are Hiring, Spread the Word!

Due to increasing enrolment demands, GTC is looking to hire a qualified teacher for one or more of the following roles:

- ◆ Primary Tutor
- ◆ Generalist Tutor
- ◆ Literacy and Numeracy Specialist (Stage 1 and 2)

Tell anyone who will listen!

PICK UP / DROP OFF TIMES

Please be on time to your sessions. During opening hours, all of our staff are teaching and are unable to be responsible for the supervision of children outside of their scheduled booking times.